

LED

TP-A3Pro Linear Light

TOPBAND TP-A3Pro Linear Light is made of highend aluminum profiles and frosted finish which provides good corrosion resistance. Grille cover selectable.

The down or up & down lighting is able to illuminate the ceilings properly and particularly welcomed for architectural applications that opt for a bright and clean ceiling.



Product Features

Structural Characteristics:

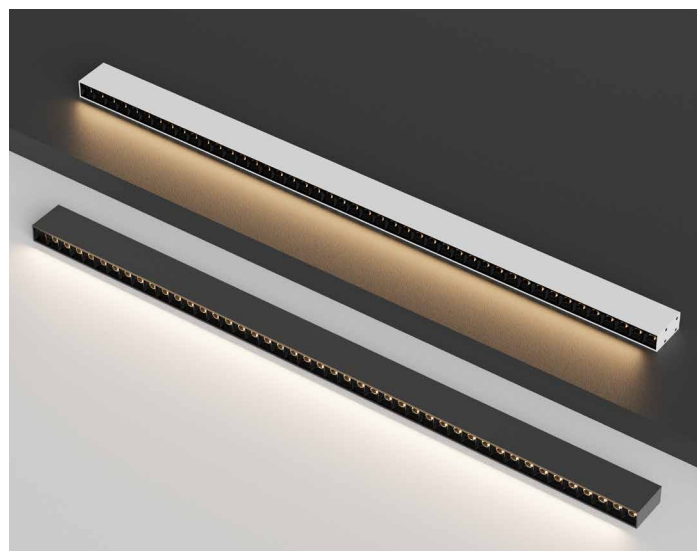
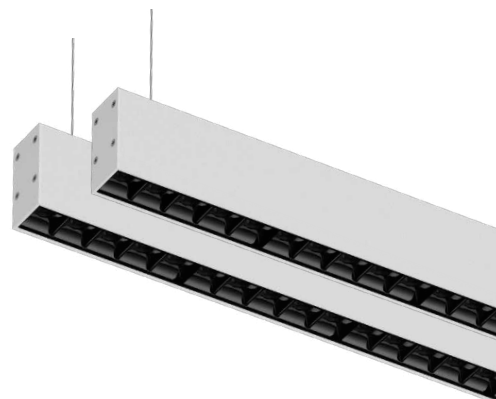
- International renowned brand company LED chips are used, providing excellent heat dissipation, environmental friendliness, and ensuring a long lifespan.
- Cold white, neutral white, warm white, and different color temperatures are available, with dual-tone dimming for color adjustment.
- Utilizing diamond-shaped anti-glare panels, it provides excellent anti-glare effect and even, shadow-free lighting.
- The housing is made of T6063 aluminum heat sink, ensuring efficient heat dissipation, rust resistance, and corrosion resistance.
- The surface is treated with high-temperature baking paint and matte finish, offering excellent corrosion resistance, rust prevention, and colorfastness.

The features of the product:

- It has a built-in constant current driver power supply, allowing for easy replacement. It is designed to withstand lightning strikes and surges, ensuring reliable quality.
- The product features short circuit protection, open circuit protection, overload protection, and surge voltage protection. It is durable and long-lasting.
- The lampshade options include PC cover, diamond-shaped cover, and diffusion cover. The PC cover can be used as coil material, allowing for seamless splicing. This means that multiple PC covers can be joined together without visible seams, providing a continuous and uniform appearance.

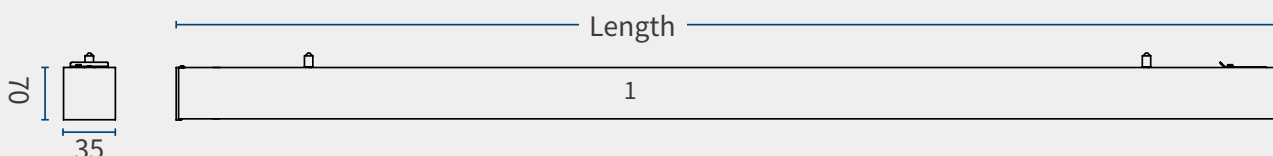
Application Scenarios:

- Aluminum profile lights are widely used in various fields;
- Including large supermarkets, conference rooms, factories, office areas, schools, and public facilities.



Product Dimensions

Dimensions	Length	Width	Height
1	1200mm/47.24"	35mm/1.38"	70mm/2.76"



Parameter

Power supply specifications		
Total power	W	40W
Input voltage	V	AC220-240V
Frequency	Hz	50/60Hz
Output voltage	V	130-160V
Output current	mA	252mA
Power factor		PF:0.9

Lighting specifications

Model.	Lm/W	CCT	W	Ra	Lighting mode	Optical Fitting	Beam Angle	Dimensions
TPL-A3-E4C40GR	90LM/W	3000K/4000K/5000K/6500K	40W	80	Down	Grille+Lens	15° /24° /36° /45°	1200×35×70mm

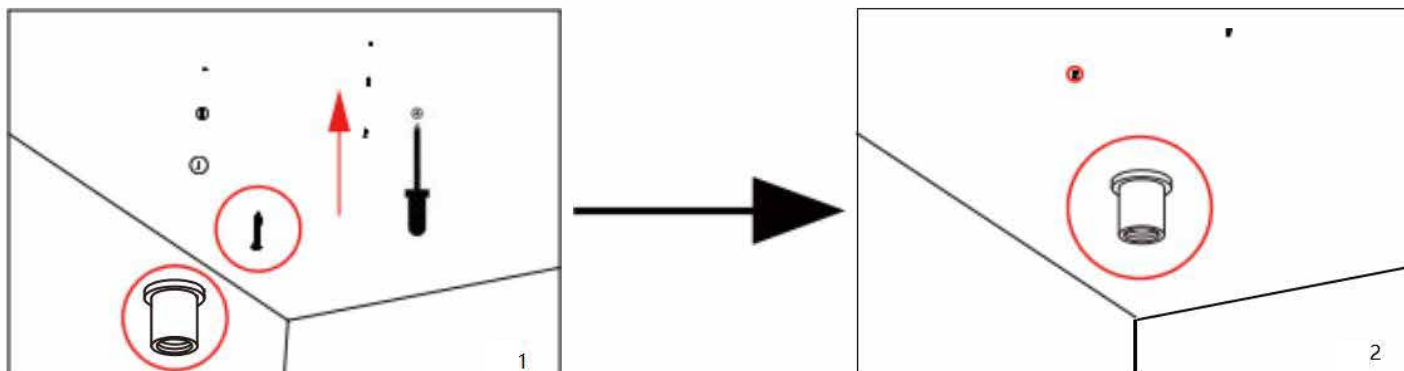
Note: Product dimensions, colors, brightness, and other specifications are customizable.

Installation Method

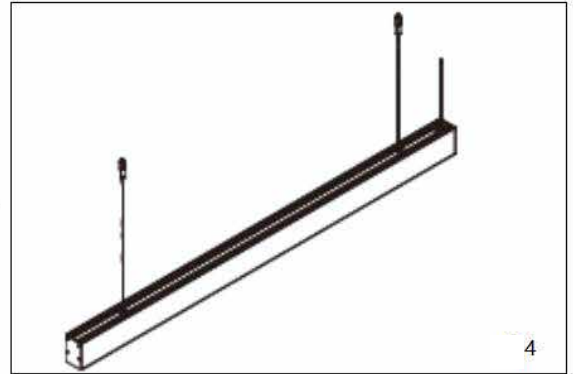
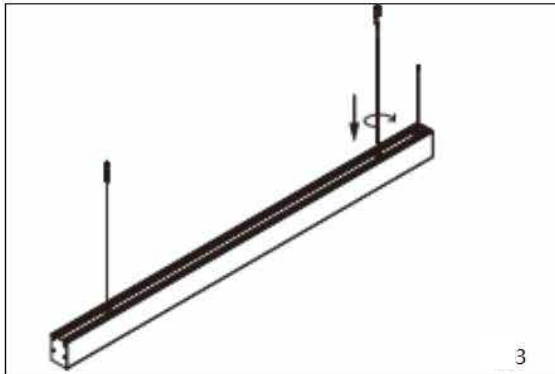
1. Ensure safety during installation by first disconnecting the mains power.
2. Choose a suitable location and drill holes. Install expansion plugs and secure the suspension bracket with self-tapping screws, as shown in Figure (1) and Figure (2).
3. Screw the screw head of the suspension rope into the installation suspension hole of the aluminum profile. Then screw the suspension bracket into the suspension bracket, as shown in Figure (3) and Figure (4).
4. Connect the power cord of the luminaire to the mains power. Connect the brown wire to the live wire (L), the blue wire to the neutral wire (N), and the yellow-green wire to the ground wire. Once the power is on, the luminaire will start working, as shown in Figure (5) and Figure (6).

Suspension Installation Method

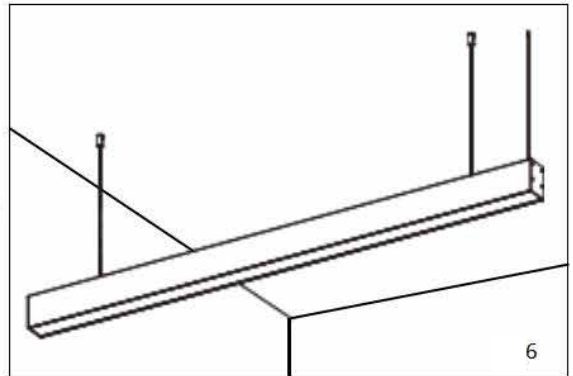
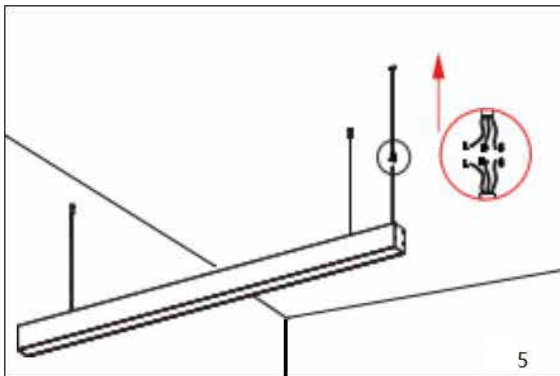
1. Choose a suitable location and drill holes. Install expansion plugs and secure the suspension brackets in place using self-tapping screws, as shown in Figure (1) and Figure (2).



2. Insert the screw head of the suspension wire into the installation suspension hole of the aluminum profile. Then, screw the suspension bracket into the screw head of the suspension wire, as shown in Figure (3) and Figure (4).

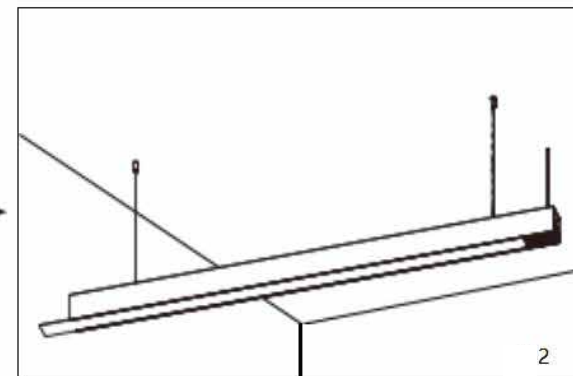
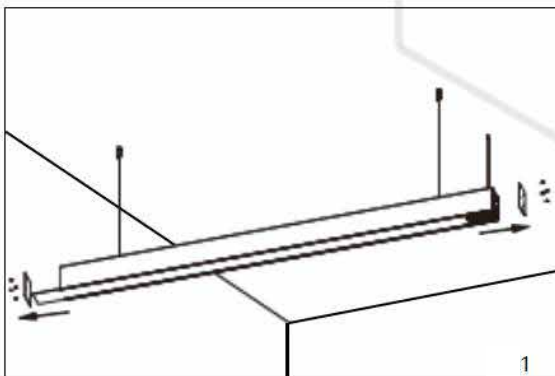


3. Connect the power cord of the luminaire to the mains electricity. Connect the brown wire to the live wire (L), the blue wire to the neutral wire (N), and the yellow-green wire to the ground wire. Once the power is turned on, the luminaire will start operating, as shown in Figure (5) and Figure (6).

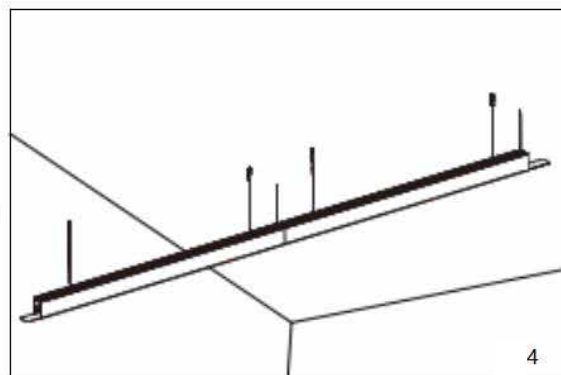
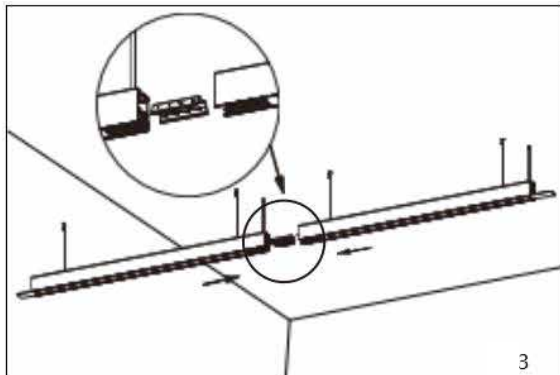


Seamless Joining Method

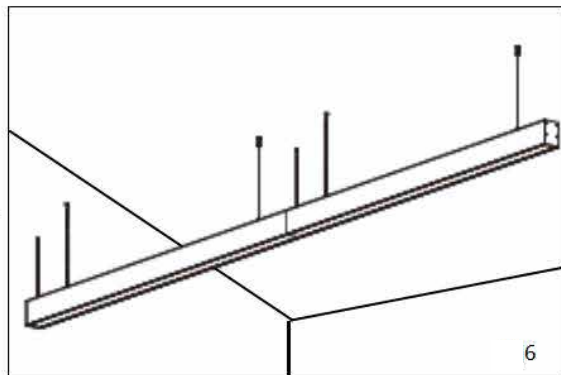
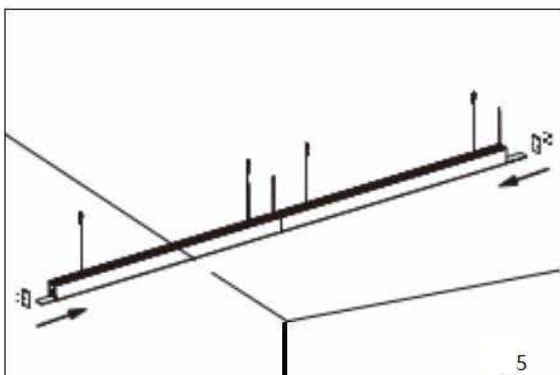
1. On the basis of a single lamp, first remove the end cap of the luminaire using a screwdriver. Then, push the lampshade 100mm aside, as shown in (Figure 1) and (Figure 2).



2. Insert the luminaire connector into the first luminaire slot and tighten it with an M4 screw. Then, secure the sy: 7.21 cm minaire and repeat step 1. Finally, connect the two luminaires together and fasten the joining screw of the second luminaire, as shown in (Figure 3) and (Figure 4).X: 38.23 cn



3. Install and connect the remaining lamps following steps 1 and 2 sequentially. Then, push the lampshade into the luminaire body and install the end caps on both ends. After completing the joining of all luminaires, power on the system. The installation is complete, as shown in (Figure 5) and (Figure 6).



Caution

- The lamp accessories such as power supply, driver and adapter cable shall use our matching products, which are not suitable for other lamps.
- Keep children away from this product, and do not let children touch live equipment.
- Avoid looking directly at the luminaire for a long time.
- Keep the product away from open flame or high temperature objects.
- Please turn off the power before cleaning the lamp. When cleaning, please you'd better to use dry cloth, do not use chemical or corrosive things to clean.

Simple Processing method

- Lamp is not bright.
- Cause: The lamp is not connected to the power supply.
- Solution: Check whether the interface between the lamp, driver and power supply is in a good state of connection.
- Check the power switch and set it to "Off".
- If the lamp has other faults, it needs to be repaired by professional personnel. When cleaning, please you'd better to use dry cloth, do not use chemical or corrosive things to clean.

Packing information

Item NO.	Outer size	Pcs/ctn	N.W.:	G.W.:
A3PRO	L1270×W300×H235mm	10	13.5Kg	15.50Kg

